


Snake Plant (Dracaena trifasciata)




I have impressively long and thick leaves, and I do not require a lot of care. I am also very beginner friendly.




 **LIGHT**
I prefer bright and indirect light but I can also tolerate very low light!




 **CARE**
Easy peasy lemon squeezy! Just wipe me with a damp cloth when I get dusty.



 **WATER**
I do not like to be watered frequently! My leaves will turn yellow and mushy if you feed me too much water!



 **DID YOU KNOW**
I am nature's air purifier and I am perfect for any homes.

Swiss Cheese Plant (Monstera deliciosa)



I have heart shaped and large lush leaves. I am mildly toxic to humans and animals. Please wash your hands after touching me to avoid irritated skin, and keep me away from furry pets!



♥ CARE

Care for me!
Wipe my dusty leaves with a damp cloth and I would love a mist once a week!



Underwatered

💧 WATER

I am thirsty sometimes! My leaves curl up when I am thirsty. Feed me some water and let the water drain out completely. I dislike wet feet!



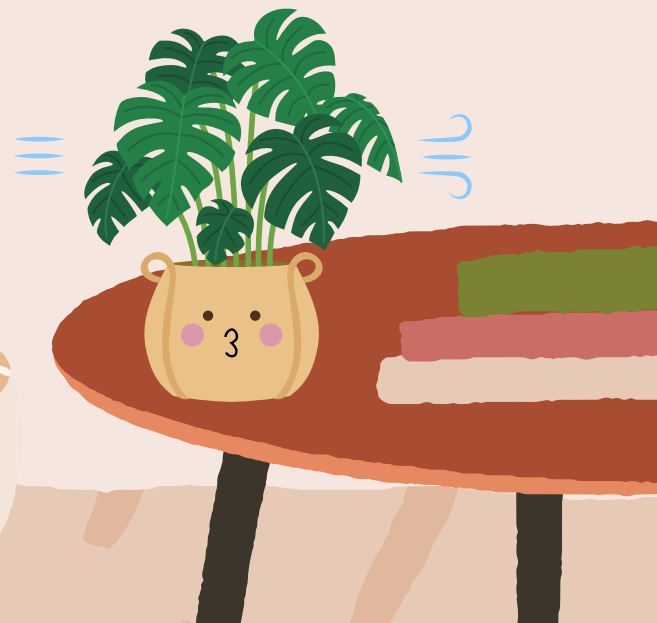
Sunburnt

☀️ LIGHT

Bright and indirect light is my favourite! My leaves will have beautiful fenestrations (Swiss Cheese splits) but I will get sunburnt if the sun is too intense!

? DID YOU KNOW

I am photogenic! Not only do I look good in pictures, but I am also air purifying!



Prayer Plant (Calathea orbifolia)



My leaves open during the day and fold together at night, like a pair of praying hands! I have large rounded leaves with stripes, suggestive of a peacock's tail!



Sensitive to chemical

♥ CARE

Filtered or purified water is good for my health! I am sensitive to the chemicals or salts in the water.



Sunburnt

☀ LIGHT

I love medium filtered light. I can also tolerate low light but not direct sun!

💧 WATER

I love humidity! I like moist soil and regular watering, but I do not like to sit in water! I need a drink when the top two inches of my soil is dry. I love to be pampered by wiping my leaves with a damp cloth. Humidifier is my best friend!



Underwatered

? DID YOU KNOW

I am photogenic! Not only do I look good in pictures, but I am also air purifying!



Fountain Palm/ Anahaw Plant (*Saribus rotundifolius*)



♥ CARE

Hello, I am a fountain palm with huge ornamental pleated foliage! I am perfect for any homes that need a quick tropical fix! Please handle me with care! I am sharp! I have sharp thorns on the spine.



? DID YOU KNOW

Do not eat my leaves raw but my fruits are edible and tasty!

💧 WATER

I am drought tolerant and do not need much water. My leaves will yellow and roots will start rotting if you feed me too much water!



Overwatered



Sunburnt

☀️ LIGHT

I love light! I do well in bright indirect light but please keep me out of direct sunlight to avoid crispy leaves!

Dumb Cane Plant (Dieffenbachia)



I am a very attractive plant with large white freckled leaves, ideal for creating a tropical look in any space of your choice!

? DID YOU KNOW

Do not eat me! I am called “dumb cane” because my plant sap can cause swelling of the mouth, speaking and breathing difficulties if the leaves and stems are chewed. Keep me away from children and pets!



☀️ LIGHT

I like diffused sunlight and partial shade, but I can also tolerate full shade. Full sun will burn my leaves!

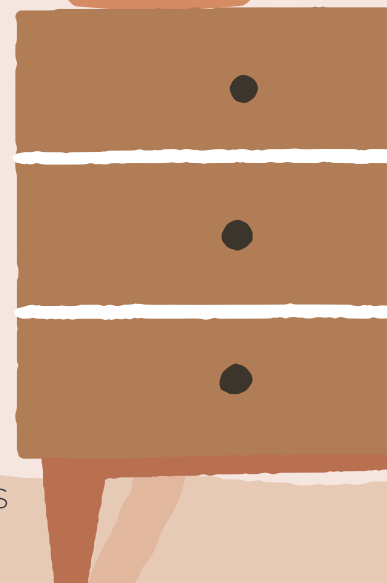


❤️ CARE

I love humidity! Give me a mist from time to time, or put me in a bathroom (with a light source) for a tropical shower experience! Cold temperatures will cause my leaves to drop.

💧 WATER

I love to be watered regularly but I do not like to sit in water. Make sure to allow my soil to dry in between waterings.



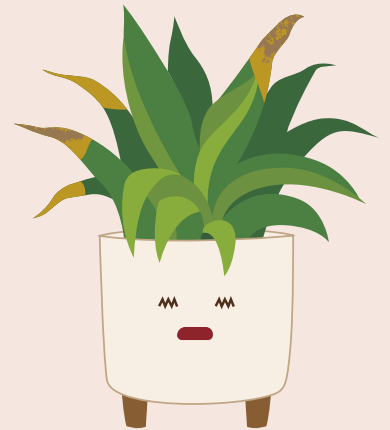
Cast-Iron Plant (Aspidistra elatior)



I am famous for being nearly indestructible!
I can survive lots of neglect and growing conditions such as substantial shady areas!
I am non toxic to humans and pets!

LIGHT

I like it shady! I can survive in areas where all else fails.
My leaves turn pale/yellow/brown when I get sunburnt!



Sunburnt



? DID YOU KNOW

I am easy-peasy-lemon-squeezy to care for!

WATER

Am I thirsty? I like a moderate amount of water. Let my soil dry out a few inches before watering!



Underwatered